



Cleveland Metroparks®

# FIND YOUR PATH

Board of Park Commissioners  
2023 Reservation Plan Updates

December 14, 2023

# 2023 Reservation Plan Updates

2023 Planning Recap  
Engagement and Updates

Acacia

Euclid Creek

North Chagrin

Next Steps



Residents of Cuyahoga County & Hinckley Township

Board of Park  
Commissioner  
s

CEO

Finance  
Human  
Resources  
Information  
Systems  
Natural  
Resources  
Legal

**Planning &  
Design**

*Engineering  
Planning  
Architecture  
Landscape  
Architecture  
GIS  
Surveying  
Project  
Management*

Administration  
Marketing  
Park  
Operations  
Park Police  
Outdoor  
Experiences

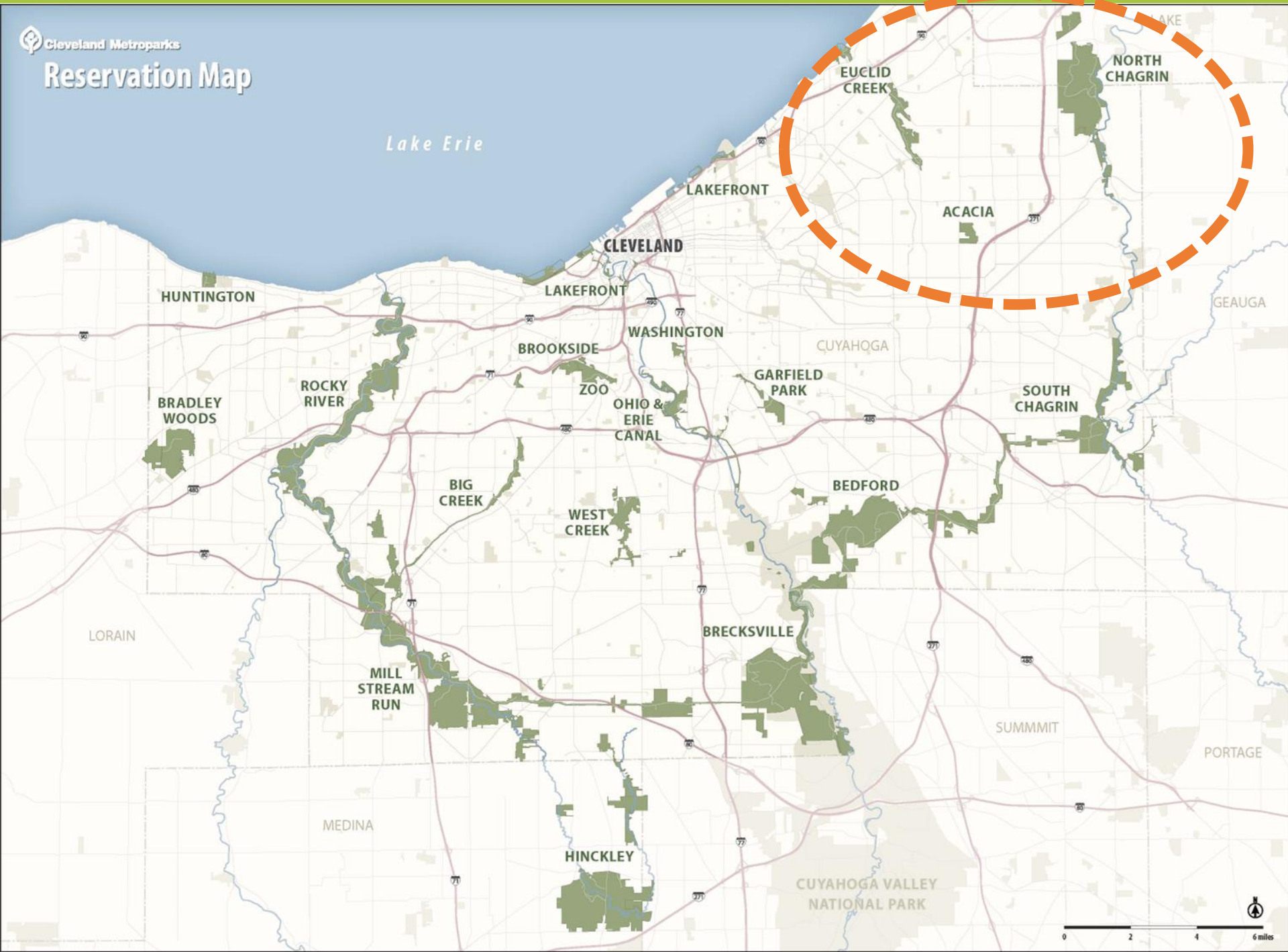


# SECOND CENTURY OF STEWARDSHIP

## OUR MISSION

Protecting nature, connecting communities  
and inspiring conservation of our world.





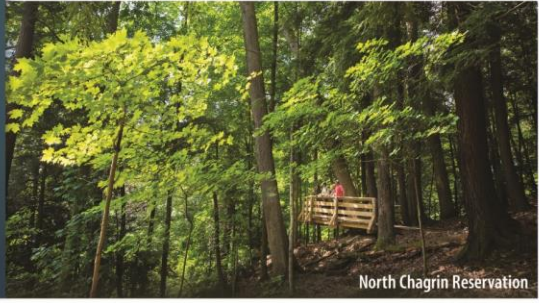
# 2023 Reservation Plan Updates

# Reservation Planning Process

- Cleveland Metroparks Internal Stakeholder Meetings
  - April 4 Kick-off
  - July 18 Initial drafts
  - Aug. 30 Review
- Present to Board of Park Commissioners – initial review
- Draft plans are online at: [www.clevelandmetroparks.com/2023plans](http://www.clevelandmetroparks.com/2023plans)
- Coordinate with adjacent communities – staff and leadership
- Community Open Houses
  - Sept. 26, Oct. 3, 4, and 19
- Review input and update plans – late October
- **Board final review late 2023**

2023 Reservation Master Plans		
Internal Stakeholders		
Name	Division	Title
Brian Zimmerman	Exec. Office	CEO
Joe Roszak	ParkOps	COO
Kristen Trolio	Devt	Director of Grants
Natalie Ronanyne	Devt	Chief Development Officer
Karen Kannenberg	Devt	Principal Giving Director
Anthony Joy	ITS	Chief Information Officer
Rose Fini	Legal	Chief Legal Officer
Stephanie Kutsko	Legal	Sr. Real Estate Manager
Kyle Baker	Legal	Sr. Asst. Legal Counsel,
Kelly Manderfield	Marketing	Chief Marketing Officer
Bill Roeder	Ops/Golf	Golf Course Manager, Manakiki
David Donner	Ops/Golf	Director of Golf
Jenn Grieser	Ops/NR	Director of Natural Resources
Josh Philipps	Ops/NR	NR Area Manager
Mary Rouse	Ops/OE	Director of Outdoor Experiences
Beth Joyave	Ops/OE	NCNC Manager
Rachel Nagle	Ops/OE	Outdoor Recreation Manager
Nancy Desmond	Ops	Special Projects
Kelly Coffman	P&D	Principal Planner
Sean McDermott	P&D	Chief Planning and Design Officer
Michele Crawford	P&D	Project Development Manager
Josiah Denson	P&D	Planner
Sara Byrnes Maier	P&D	Principal Planner
Brandon Garman	P&D	Cartographer
Chuck Engelhart	ParkOps	Director of Parks - East
Brad Shawhan	ParkOps	Park Manager
Shaun Jones	ParkOps	Park Manager
Jim Rodstrom	ParkOps	Director of Construction
Boyd Sharp	ParkOps	Park Manager Trainee
Laura Schuch	P&D	GIS Manager
Kelly Stillman	Police	Chief
Ken Schabitzer	Police	Captain
Charlie Moore	Police	Captain
Venita Barham	Police	Dept. Admin

**Cleveland Metroparks**  
**RESERVATION PLAN**  
**OPEN HOUSES**  
**2023**



Cleveland Metroparks is updating Reservation Master Plans for:

- Acacia Reservation
- Euclid Creek Reservation and Euclid Creek Greenway
- North Chagrin Reservation

Each event will provide information about all three parks along with light refreshments. Attendees can share input with park staff. Short presentations will take place at 5:45 and 7:00. Plans can also be viewed and comments submitted at [clevelandmetroparks.com/2023plans](http://clevelandmetroparks.com/2023plans)

**Join us for In-person Open Houses from 5:30 - 7:30 p.m. on the following dates:**

**Tuesday, September 26**  
 Acacia Reservation

Acacia Shelter  
 26899 Cedar Road  
 Lyndhurst, OH 44122

**Tuesday, October 3**  
 North Chagrin Reservation

North Chagrin Nature Center  
 Auditorium  
 401 Buttermilk Falls Parkway  
 Mayfield Village, OH 44143

**Wednesday, October 4**  
 Euclid Creek Reservation and  
 Euclid Creek Greenway

Moore Counseling Services  
 22639 Euclid Avenue  
 Euclid, OH 44117

**An Online Presentation will also take place Thursday, October 19 at 6:30 p.m.**



Visit [clevelandmetroparks.com/2023plans](http://clevelandmetroparks.com/2023plans) to register.

# Community Engagement

- Plans were posted online
- We hosted four Community Open Houses - three in-person and one online
- We met with cities surrounding the parks:
  - Beachwood
  - Euclid
  - Lake Metroparks
  - Lyndhurst
  - Mayfield Village
  - Richmond Heights
  - South Euclid
  - Willoughby Hills

# What We Heard – Acacia



- Attendees expressed concern about conflicts between bike and pedestrian on trails  
*Result: staff cleared vegetation to improve lines of sight; recommend Trail Ambassadors assist by distributing bike bells*
- The fence along Richmond Rd. / northwest pond is unsightly. The fence is a remnant of the former golf course and is not required.  
*Result: staff will remove the fence in this area*
- The draft plan called for removing the four former golf course gazebos due to poor condition and bird issues; attendees expressed a desire to keep the structures.  
*Result: The structure in the best condition will remain; remainder will be removed*
- Two trail segments were proposed to be removed; attendees want to keep all trails.  
*Result: Swap trail that remains; maintain experience and connection but remove two redundant segments including a trail that is consistently wet*
- Attendees said restrooms are needed, particularly in the north half of the park.  
*The plans call for a new restroom in the northwest area of the park.*

# ACACIA RESERVATION

PARK PLAN

DECEMBER 2023

- RESERVATION-WIDE CONSIDERATIONS**
- Improve accessibility by creating links to Euclid Creek Reservation, nearby neighborhoods and to regional trails identified in the Cuyahoga Greenways Plan
  - Improve trail system by removing select vegetation improving lines of sight
  - Trail ambassadors to distribute bike bells to promote trail etiquette

- NORTHERN TIER**
- Connect north neighborhood to park via trail spur when support exists
  - Improve trail experiences - potentially add sections of boardwalk across wet areas and viewing areas near wetlands

- RICHMOND ROAD CORRIDOR**
- Address treatment of park frontage - fence removal, screening, selected views into the park, and beautification.
  - Develop connections with Legacy Village, local schools, adjacent neighborhoods, and eventually Euclid Creek Reservation as opportunities allow.
  - Protect stream corridors and mature trees on west side of Richmond Rd.
  - Add new restroom; link utilities to maintenance area

- GAZEBOS**
- Repair one and remove remainder

- MAINTENANCE AREA**
- Remove and sort former stockpile; Restore vegetation
  - Add screening between pond and maintenance area
  - Investigate sewer connection

- SOUTHWEST TIER**
- Address trail drainage; coordinate with WRRSP if within covenant area
  - Develop program area (circular boulder seating) on west side of Euclid Creek.
  - Pursue protection for adjacent property along Euclid Creek.

- TRAIL AND OVERLOOK**
- Capture views of Euclid Creek and surrounding landscape.
  - Re-grade trail to improve accessibility

- ACACIA SHELTER, RESTROOMS AND PICNIC AREA**
- Use as an interpretive education hub. Interpret the history of Acacia, the bequest to Cleveland Metroparks, and the restoration activities.

- PARK ENTRY DRIVES AND PARKING**
- Convert one entry drive to bike and pedestrian access
  - Improve visitor experience and traffic flow
  - Add green infrastructure, reconfigure and right-size parking
  - Prioritize bicycle and pedestrian circulation and neighborhood access
  - Reconfigure and repave parking
  - Improve remaining entry drive alignment and add bike and pedestrian access
  - Work with partners to improve visibility at crosswalks
  - Improve accessibility to South West corner

- EUCLID CREEK CROSSING**
- Enhance accessibility of the trail and improve creek crossing and railing for a more park-like experience

- RTA STATIONS**
- Improve with park-like shelter orienting and inviting transit users to Acacia Reservation.

**Legend**

- Proposed Trail
- ▨ Improve Buffer
- ▨ Proposed Site Improvement
- Remove Trail
- All Purpose Trail
- Other Trails
- Water
- Wetlands
- Covenant Area

**Scale and Orientation**

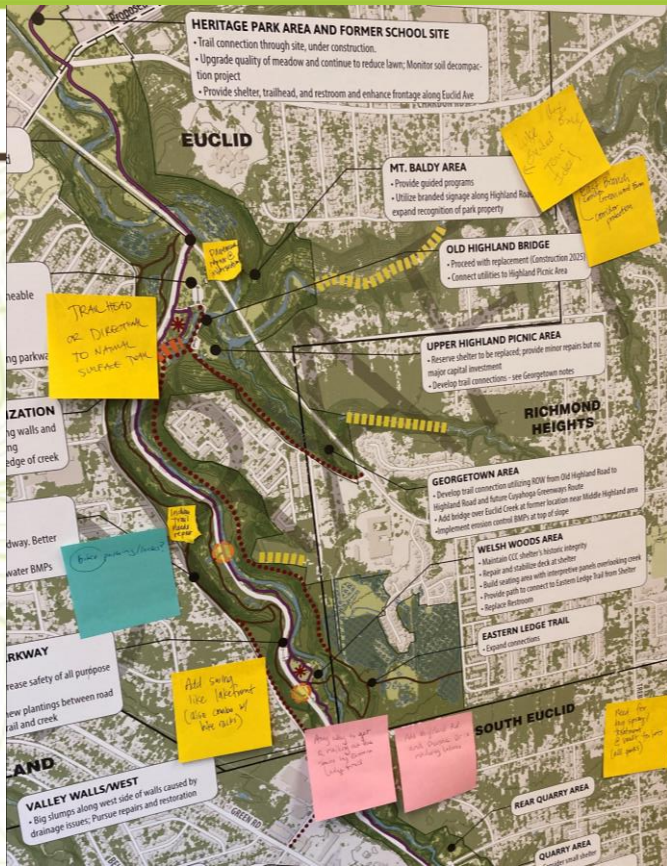
0 200 400 600 800 1,000 ft

NORTH





# What We Heard – Euclid Creek



- Excitement about park expansion and new trails.  
*Current RAISE planning effort to determine route for connection*
- Generally positive responses to new traffic light and entry drive updates
- Agreement with proposed traffic calming on Euclid Creek Parkway and separation of APT
- Request for additional trail connections
  - Requests for more benches and handrails along Eastern Ledge Trail
  - Agreement with proposed flush restroom upgrade at Highland Picnic Area



# EUCLID CREEK RESERVATION

## PARK PLAN

DECEMBER 2023

### LAKEFRONT CONNECTOR

- Work with partners to construct trail connection to lakefront portion of reservation

### HIGHLAND INTERSECTION

- Review timing and function of light and alter if needed

### HIGHLAND PICNIC AREA

- Improve condition of roadside parking using permeable paving. Continue to use shuttle for peak events.
- Add fitness zone
- Replace Smokehouse Shelter
- Add flush restrooms near shelter and south along parkway

### CREEKSIDE AREA BANK STABILIZATION

- Address failure of historic creekside retaining walls and stabilize streambanks; Pursue outside funding
- Relocate APT away from critical points at edge of creek

### GLENRIDGE AREA

- Supplement forest vegetation
- Stabilize existing trail along roadway. Better define trail down hillside.
- Identify and implement stormwater BMPs

### HERITAGE PARK AREA AND FORMER SCHOOL SITE

- Trail connection through site, under construction.
- Upgrade quality of meadow and continue to reduce lawn; Monitor soil decompaction project
- Consider adding restroom in the future

### MT. BALDY AREA

- Provide guided programs
- Utilize branded signage along Highland Road to expand recognition of park property

### OLD HIGHLAND BRIDGE

- Proceed with replacement (Construction 2025)
- Connect utilities to Highland Picnic Area

### UPPER HIGHLAND PICNIC AREA

- Reserve shelter to be replaced; provide minor repairs but no major capital investment
- Develop trail connections - see Georgetown notes

### GEORGETOWN AREA

- Develop trail connection utilizing ROW from Old Highland Road to Highland Road and future Cuyahoga Greenways Route
- Add bridge over Euclid Creek at former location near Middle Highland area
- Implement erosion control BMPs at top of slope

### RESERVATION-WIDE

- Improve wayfinding and trail connections with Partners and Municipalities
- Connect to regional trails and neighborhoods balancing access with environmental and security concerns
- Reduce parking directly adjacent to Euclid Creek Parkway
- Identify and implement stormwater BMPs, streambank stabilization and other measures to protect park resources
- Add Fitness Zone (TPL model and/or Helios) at north end (Highland), central (Welsh Woods), and south end (Bluestone or Kelley or maintenance area) along APT



### EUCLID CREEK PARKWAY

- Increase enforcement
- Add traffic islands to increase safety of all purpose trail crossings
- Consider no mow and new plantings between road and trail and between trail and creek

### WELSH WOODS AREA

- Maintain CCC shelter's historic integrity
- Repair and stabilize deck at shelter
- Build seating area with interpretive panels overlooking creek
- Provide path to connect to Eastern Ledge Trail from Shelter
- Replace Restroom

### EASTERN LEDGE TRAIL

- Expand connections

### VALLEY WALLS/WEST

- Big slumps along west side of walls caused by drainage issues; Pursue repairs and restoration

### MONTICELLO CROSSING AND MANAGEMENT CENTER

- Improve park and community wayfinding
- Add parking and flush restroom
- Create new trail entrance from Monticello; Consider lighting bridge structure
- Add fitness zone
- Partner to link to South Euclid and Cleveland Heights parks along Monticello – city facilities include dog park, ballfields, and water park
- Sign and stripe Park Road trail crossing.
- Expand maintenance yard to south if needed

### REAR QUARRY AREA

### QUARRY AREA

- Consider small shelter

### BLUESTONE TRAIL

- Add wayfinding to highlight entrance

Quarry Park

Denison Park

### KELLEY PICNIC AREA

- Add crosswalk to proposed improvements across Park Drive

### SOUTH ENTRANCE

- As opportunities arise, increase buffer at south end of park
- Improve wayfinding and trail connections to south entry
- Connect to Acacia, North Chagrin and Heights bike boulevard wayfinding
- Consider improvements to traffic and parking

- Traffic Calming
- Proposed Fitness Zone
- Proposed Trail
- Improve Buffer
- Proposed Site Improvement
- All Purpose Trail
- Euclid Creek Greenway PH2
- Other Trails
- Water
- Wetlands

CLEVELAND HEIGHTS

CLEVELAND

SOUTH EUCLID

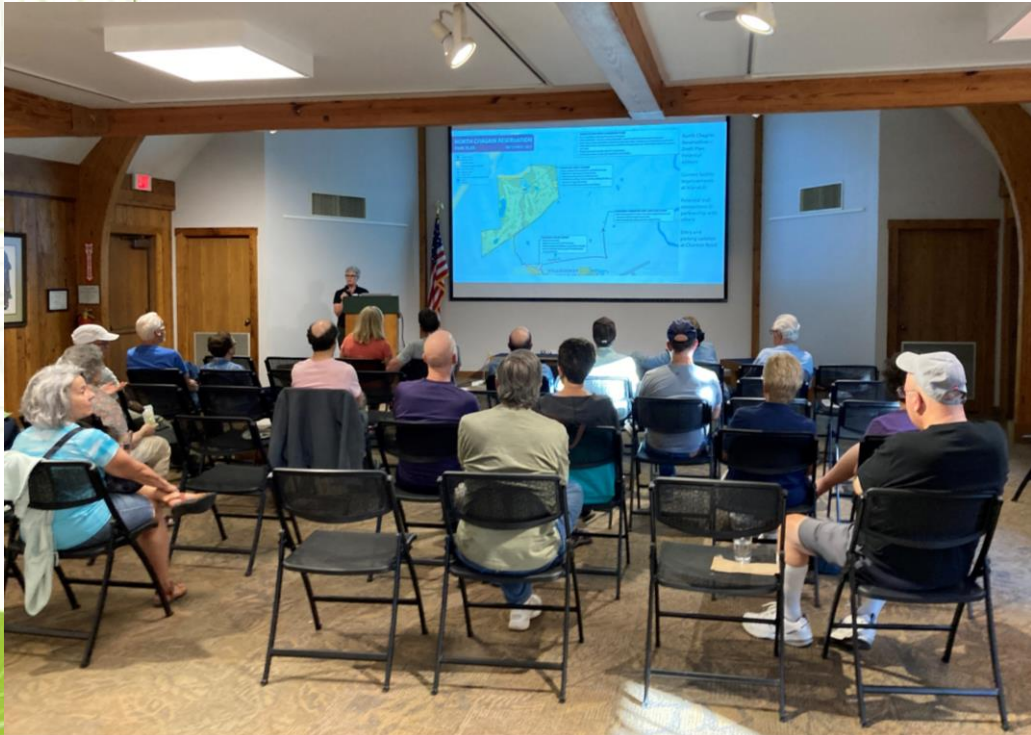


0 500 1,000 1,500 2,000 ft



# What We Heard – North Chagrin











- Enthusiasm about proposed APT connection at Sunset Lane
- Concern about lack of reception for mobile phones in parts of the park hindering emergency response
- Attendees advocated for continued investment in North Chagrin Reservation



# NORTH CHAGRIN RESERVATION

## PARK PLAN

DECEMBER 2023

-  Kayak access
-  Proposed Trail
-  Land Protection
-  Proposed Improvement Site
-  All Purpose Trail
-  Buckeye Trail
-  Other Trails
-  Wetland Enhancement Project Area
-  Water
-  Wetland

### RESERVATION-WIDE CONSIDERATIONS

- Focus on wayfinding, including park entryways and orientation.
- Address infrastructure - water lines, culverts and headwalls - incorporate green infrastructure options as appropriate.
- Advance long-term trail sustainability by reducing trails, improving condition, combining uses, and simplifying the overall system.
- Address invasive species, restoration opportunities, and threats to ecological systems (ex.: Hemlock Woolly Adelgid) with restoration plan overlay.
- Designate Backcountry Camp Sites. Operate on a permit system.
- Provide option for bases and other game equipment at reserve facilities.
- Assess area lacking cell signal and consider options

### MANAKIKI GOLF COURSE

- Pursue easements for stream protection and buffer to the north.
- Complete new maintenance center and cart barn
- Develop Driving Range at former maintenance area.
- Add trailhead at parking lot and work with City of Willoughby Hills on a connection to Chardon Rd. entrance.
- Complete accessibility improvements at main ballroom

### CHAGRIN CORRIDOR AND LAKE ERIE LINKS

- Work with area partners to improve connectivity to regional resources and destinations. Reference Chagrin Connects Plan.
- Improve wayfinding for cyclists, pedestrians and park visitors

### CHARDON ROAD ENTRY

- Remove east entry drive and reuse as parking area
- Realign west entry drive to a 90° intersection
- Partner to determine need to provide APT link to Roemisch Park and to Manakiki

### WHISPERING WOODS

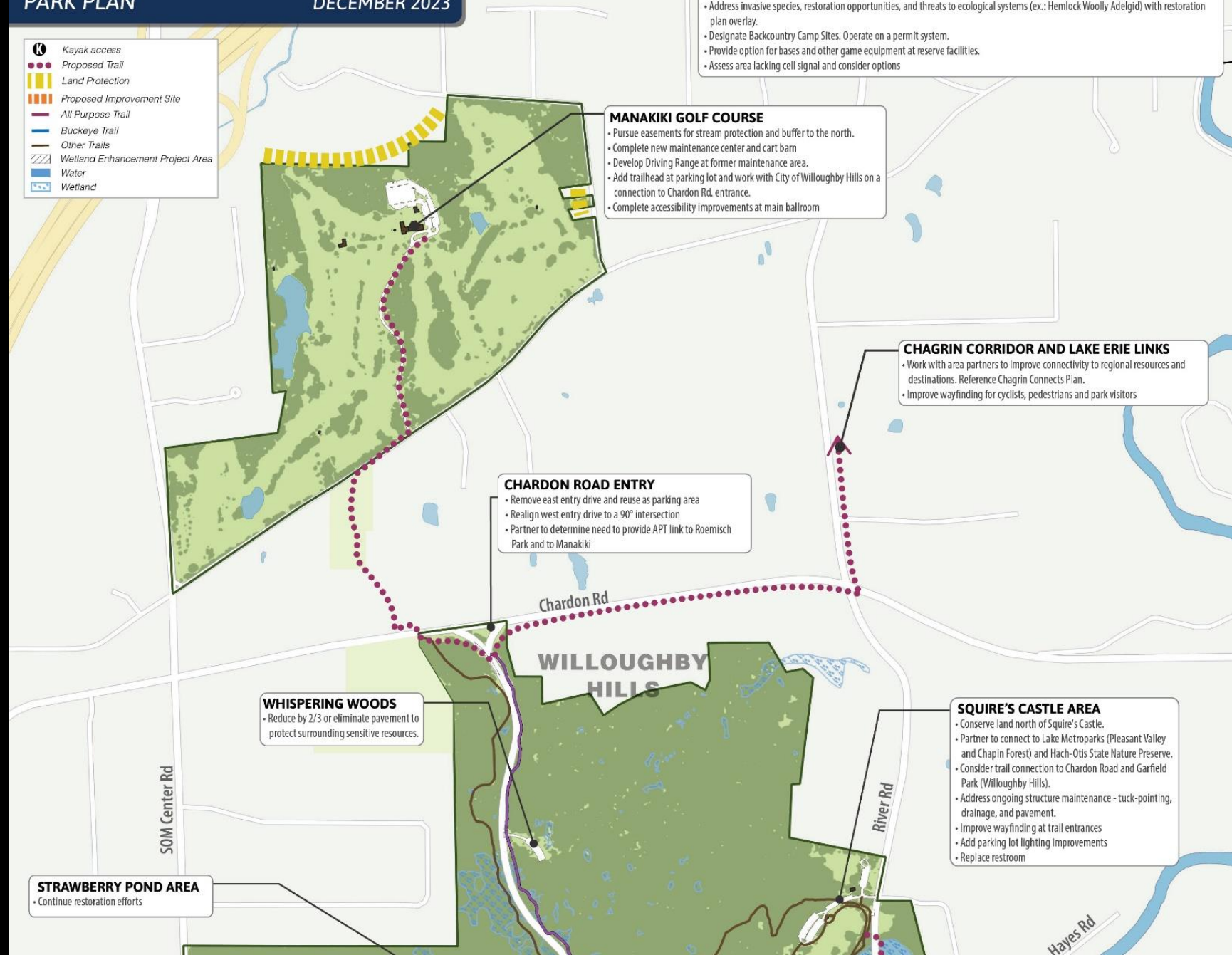
- Reduce by 2/3 or eliminate pavement to protect surrounding sensitive resources.

### SQUIRE'S CASTLE AREA

- Conserve land north of Squire's Castle.
- Partner to connect to Lake Metroparks (Pleasant Valley and Chapin Forest) and Hach-Otis State Nature Preserve.
- Consider trail connection to Chardon Road and Garfield Park (Willoughby Hills).
- Address ongoing structure maintenance - tuck-pointing, drainage, and pavement.
- Improve wayfinding at trail entrances
- Add parking lot lighting improvements
- Replace restroom

### STRAWBERRY POND AREA

- Continue restoration efforts



**INTERGROVE CABIN AREA**

- Continue to promote Intergrove Cabin as reservable shelter / retreat center, including serving as camp base.
- Continue wetland restoration.
- Add a link to trails
- Add flush restrooms

**PARK MAINTENANCE CENTER**

- Upgrade lunchroom
- ADA retrofits at existing Police Station public bathroom and sign for public use
- Combine garage space

**SUNSET LANE**

- Add APT to connect park and SOM Center trails

**OXBOW AREA**

- Connect to Squire's Castle.

**EAST-WEST TRAIL CONNECTIONS**

- Connect upland trail with riverside trails in multiple locations

**OLD RIVER FARM AREA**

- Address river bank undercut and potential structural issues with geotechnical analysis and design for stabilization
- Open area for public access
- Create better river access
- Clear views to river from shelter
- Add steps/ramp to lower level

**RIVER GROVE**

- Permit to groups for overnight camping. Promote use in conjunction with Buckeye Trail
- Connect shelter to lower river area
- Improve trail connections
- Add flush restrooms

**ROGERS ROAD AREA**

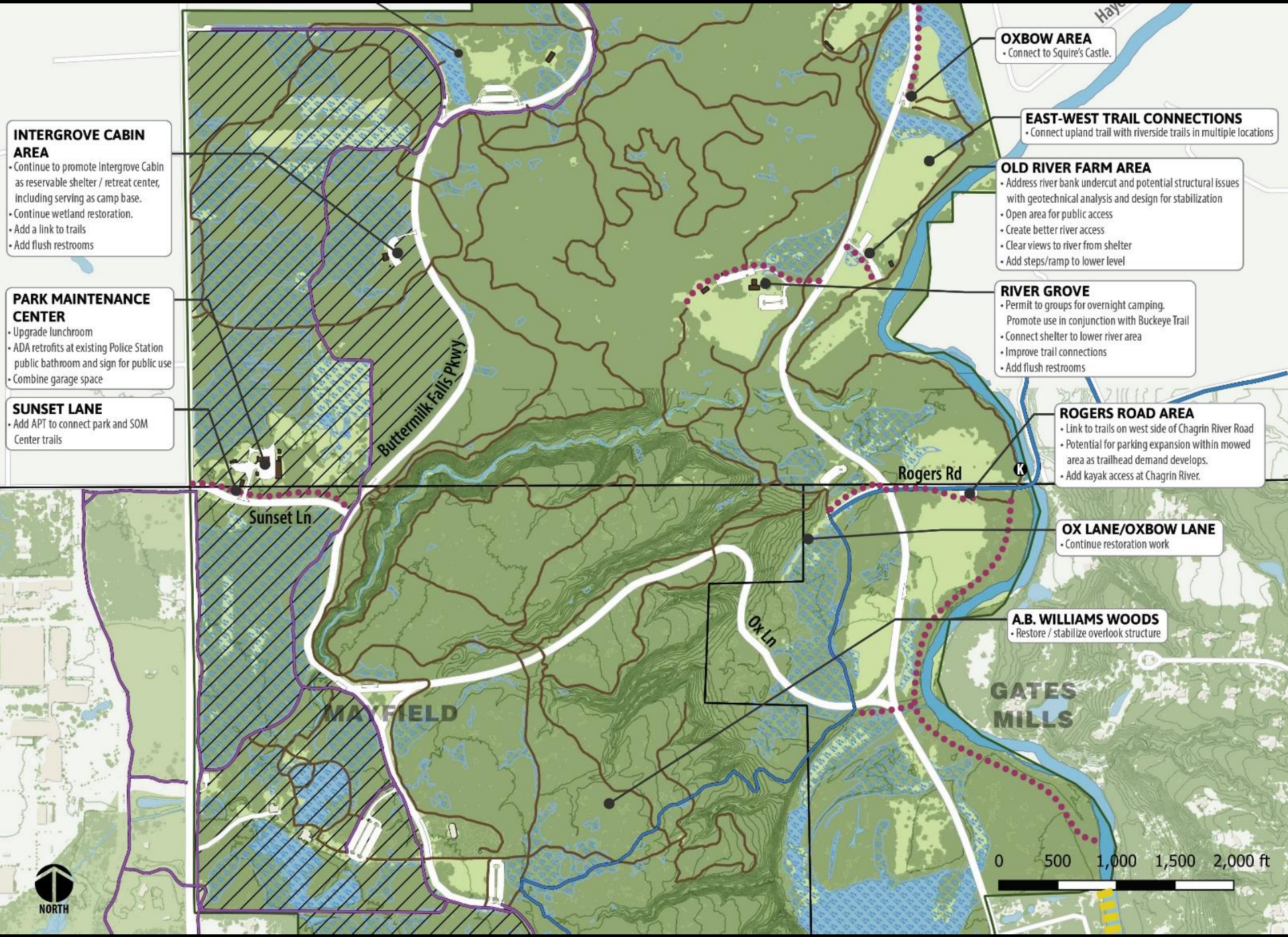
- Link to trails on west side of Chagrin River Road
- Potential for parking expansion within mowed area as trailhead demand develops.
- Add kayak access at Chagrin River.

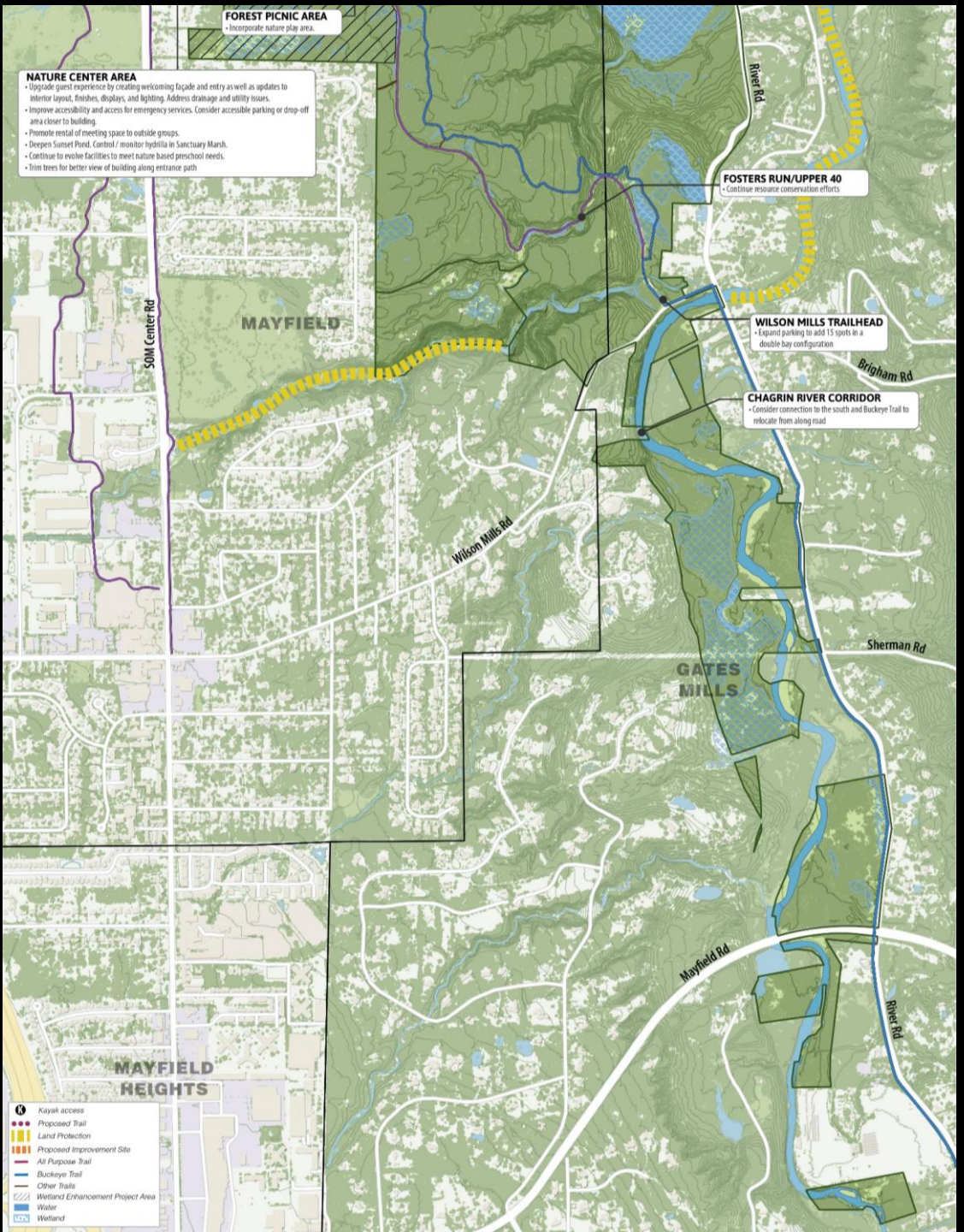
**OX LANE/OXBOW LANE**

- Continue restoration work

**A.B. WILLIAMS WOODS**

- Restore / stabilize overlook structure





**FOREST PICNIC AREA**  
 • Incorporate nature play area.

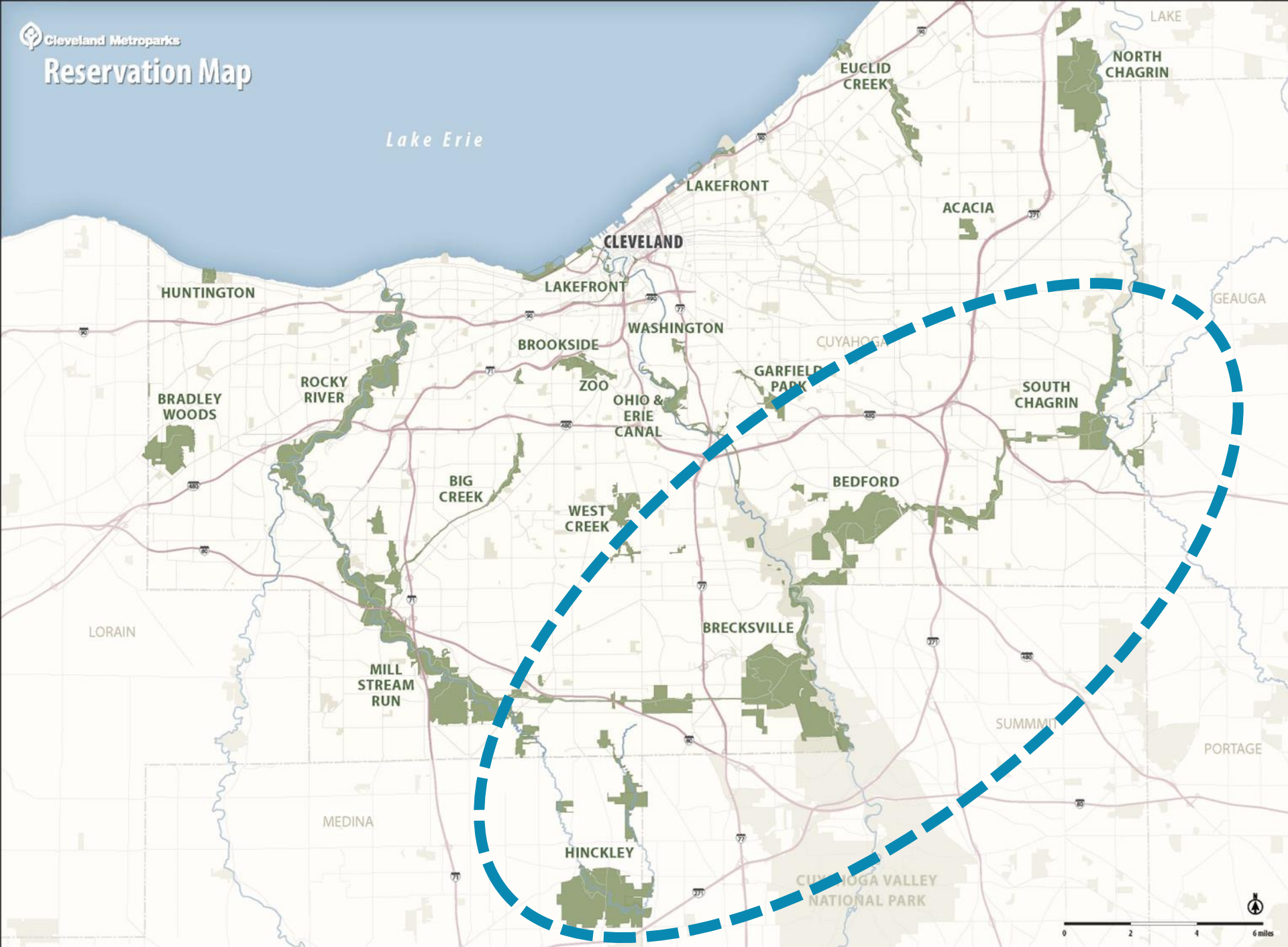
**NATURE CENTER AREA**  
 • Upgrade guest experience by creating welcoming façade and entry as well as updates to interior layout, finishes, displays, and lighting. Address drainage and utility issues.  
 • Improve accessibility and access for emergency services. Consider accessible parking or drop-off area closer to building.  
 • Promote rental of meeting space to outside groups.  
 • Deepen Sunset Pond. Control / monitor hydrilla in Sanctuary Marsh.  
 • Continue to evolve facilities to meet nature based preschool needs.  
 • Trim trees for better view of building along entrance path.

**FOSTERS RUN/UPPER 40**  
 • Continue resource conservation efforts

**WILSON MILLS TRAILHEAD**  
 • Expand parking to add 15 spots in a double bay configuration

**CHAGRIN RIVER CORRIDOR**  
 • Consider connection to the south end Buckeye Trail to relocate from along road

- Kayak access
- Proposed Trail
- Land Protection
- Proposed Improvement Site
- All Purpose Trail
- Buckeye Trail
- Other Trails
- Wetland Enhancement Project Area
- Water
- Wetland



## 2024 Reservation Plan Updates

- South Chagrin
- Bedford
- Brecksville
- Hinckley