



2020

*A Year of
Resiliency*

Cleveland Metroparks
Real Estate Report



**Cleveland
Metroparks®**



Overview

- Conservation at a Glance
- Our Year's Work
- Conservation by the Numbers
- Surpassing 24,000 Acres
- 2020 A Year of Resiliency
- Stewardship

2020 Our Year's Work

Land Protection



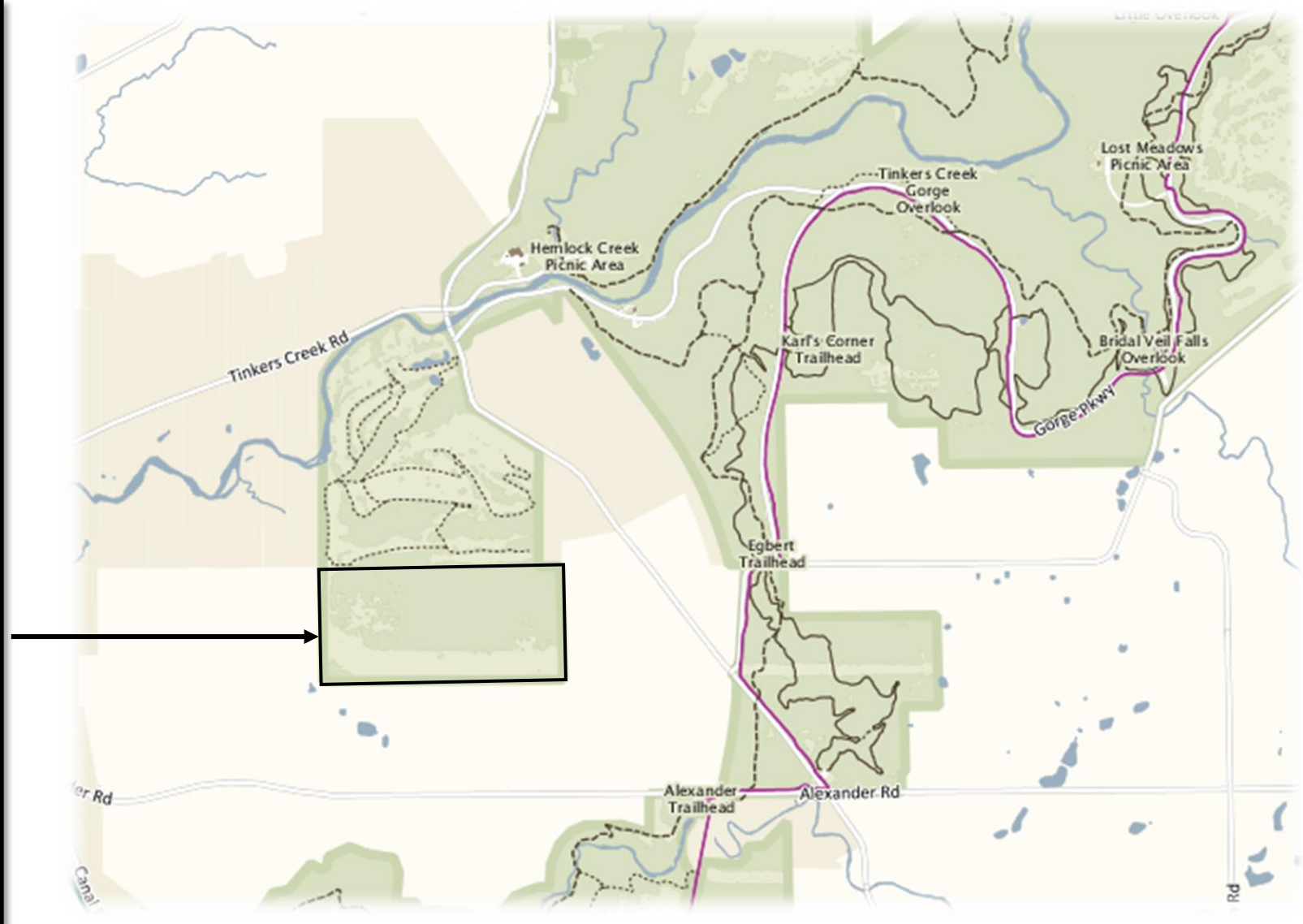
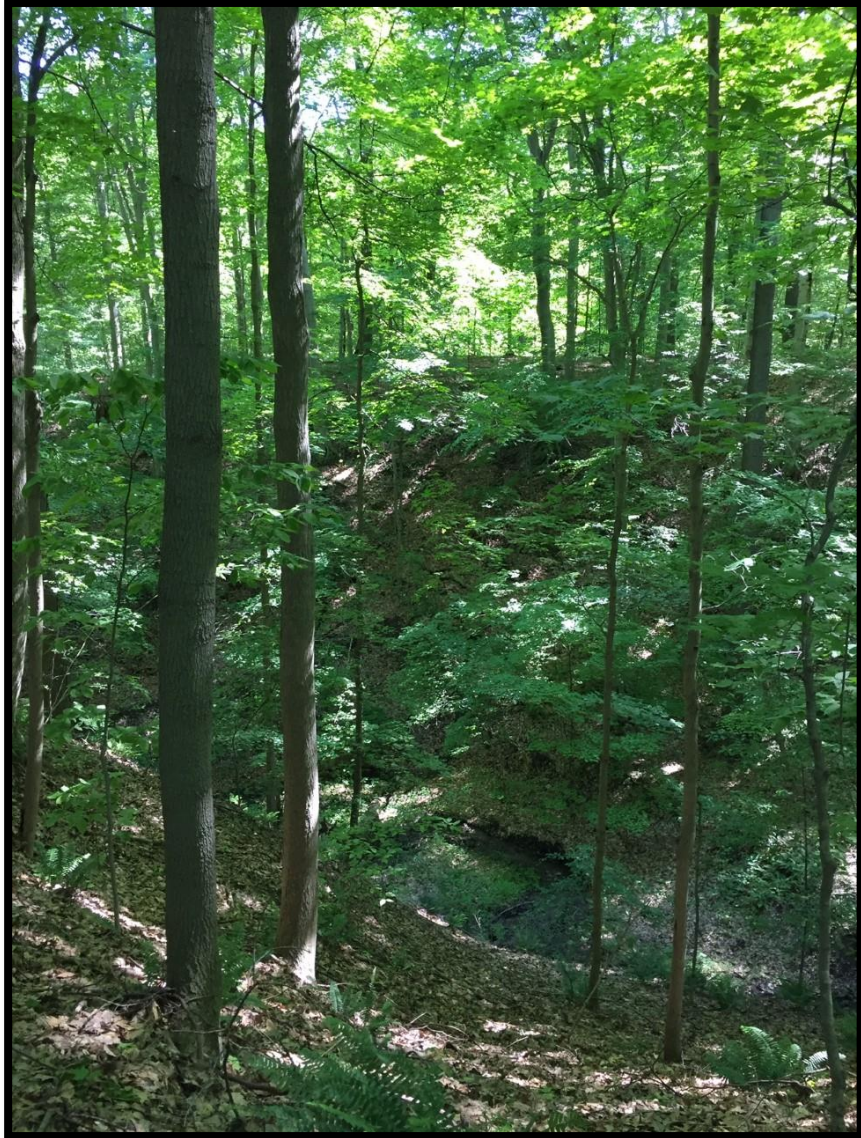
Conservation at a Glance

OUR IMPACT IN NUMBERS

- 17 transactions totaling 277 acres
- Emerald Necklace total acreage: 24,093
- 61 acres donated at a value of \$1,718,900
- Land acquisition costs totaled \$4,101,882 (which included \$2,247,435 covered by grant funds, over 54%)
- Total land value: \$5,820,782 (with \$1,854,447 in Cleveland Metroparks funds, just under 32%)
- New parkland in 12 communities and 10 reservations
- Preserved 17,292 feet of headwater streams and 7,972 feet of rivers and creeks
- Acquired 1.1 miles of property for existing and future trail connections
- Protection of 11 acres of wetland and 198 acres of forest

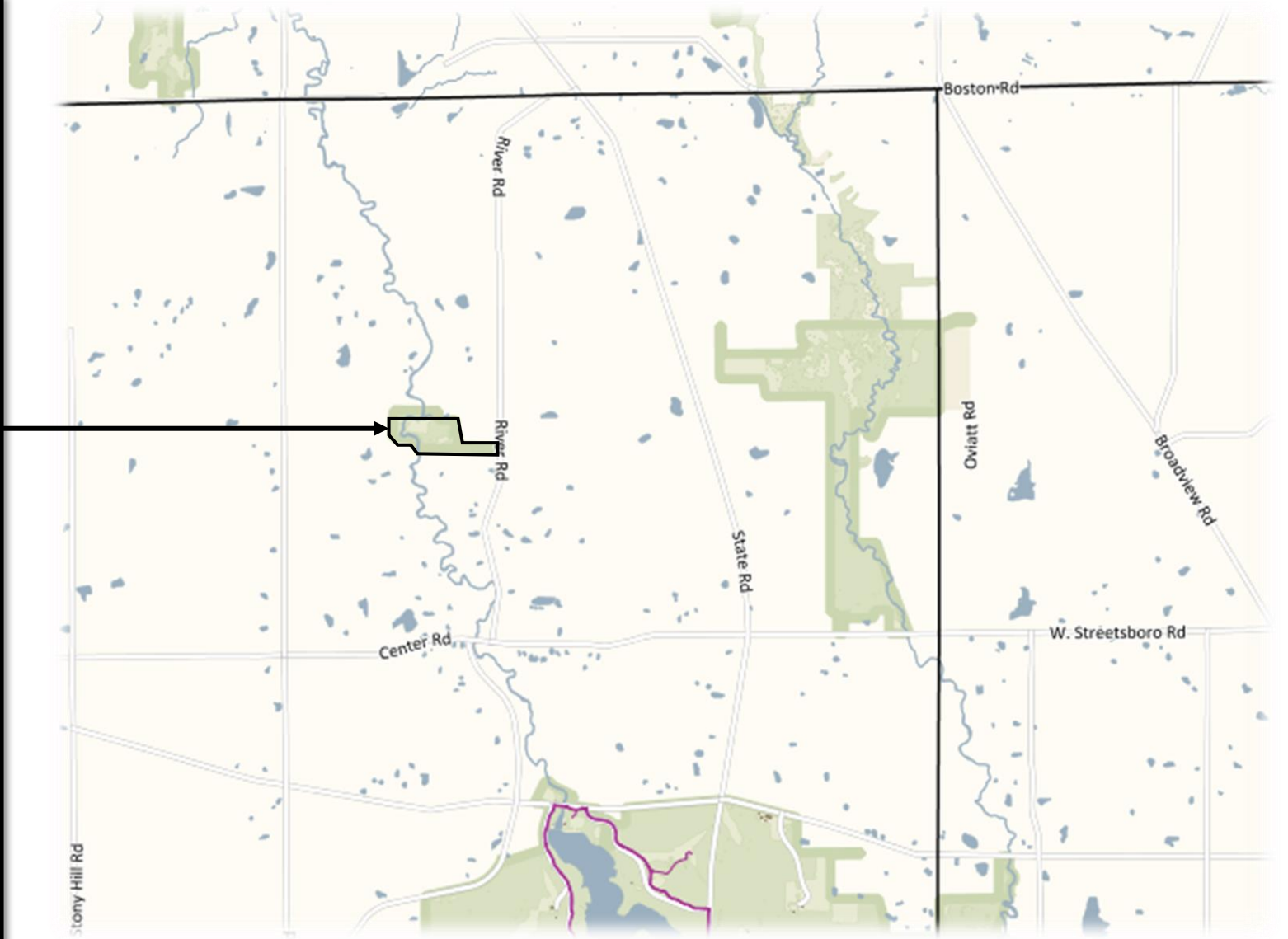
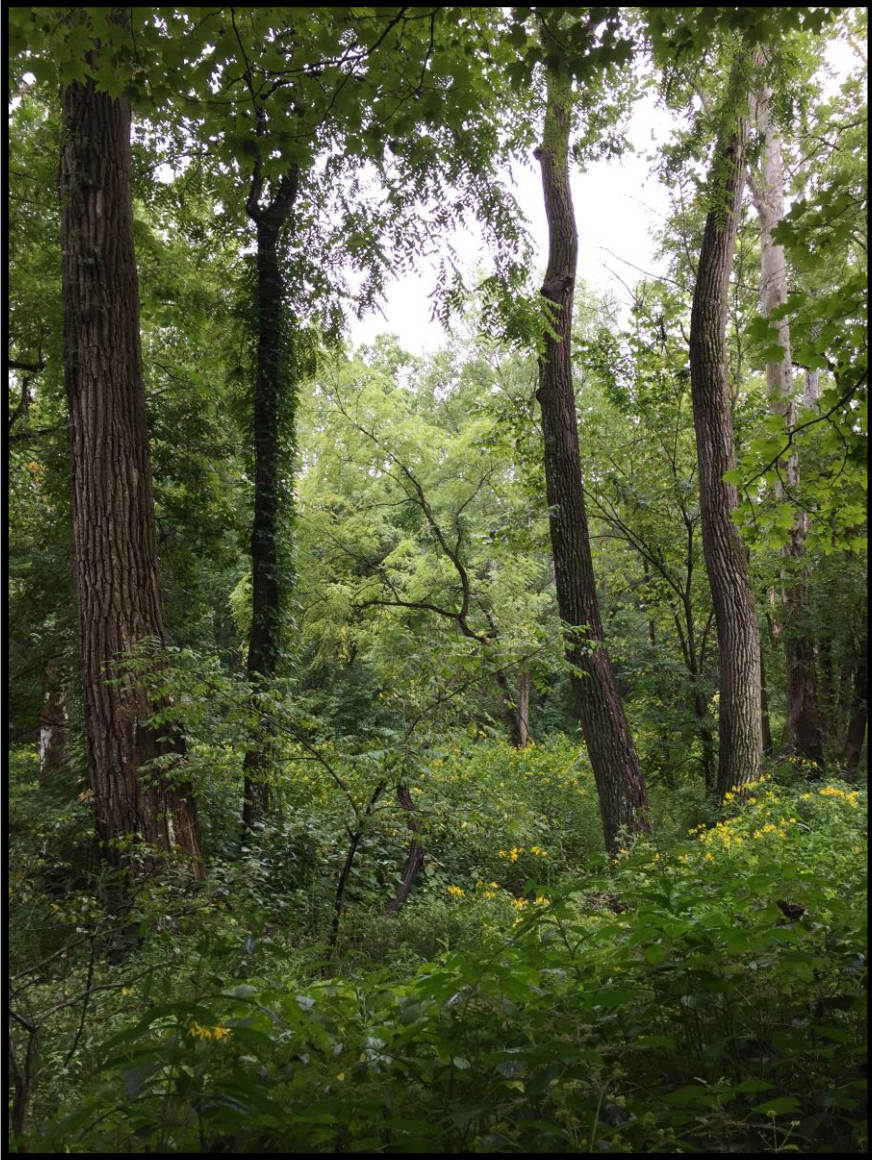
Grant Funded Properties (\$2.25 Million)

88.4 Acres Cleveland Electric Illuminating Co. Property – Bedford Reservation



Grant Funded Properties

24.7 Acres Olsavsky/Robb Property – Hinckley Reservation



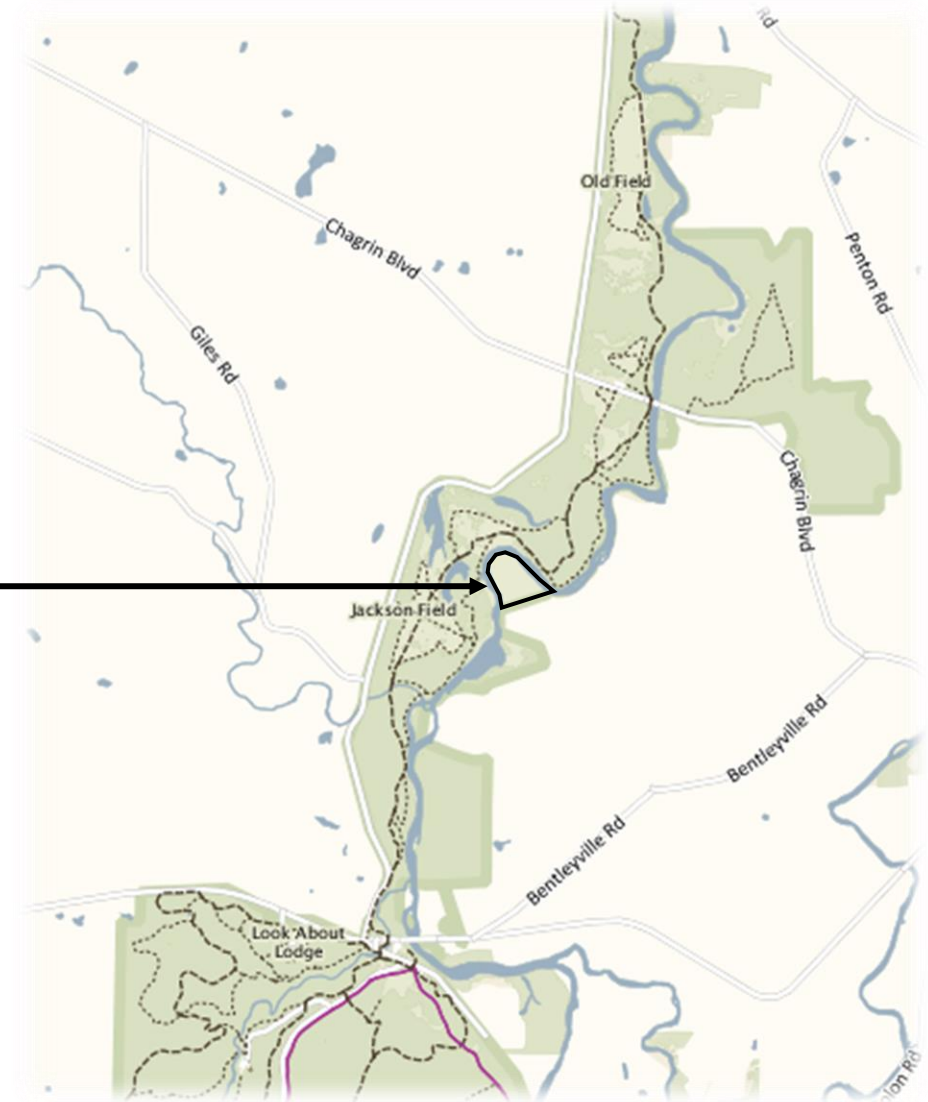
Grant Funded & Donated Properties

23.9 Acres Spirnak Family/Catanzarite Property - Mill Stream Run Reservation



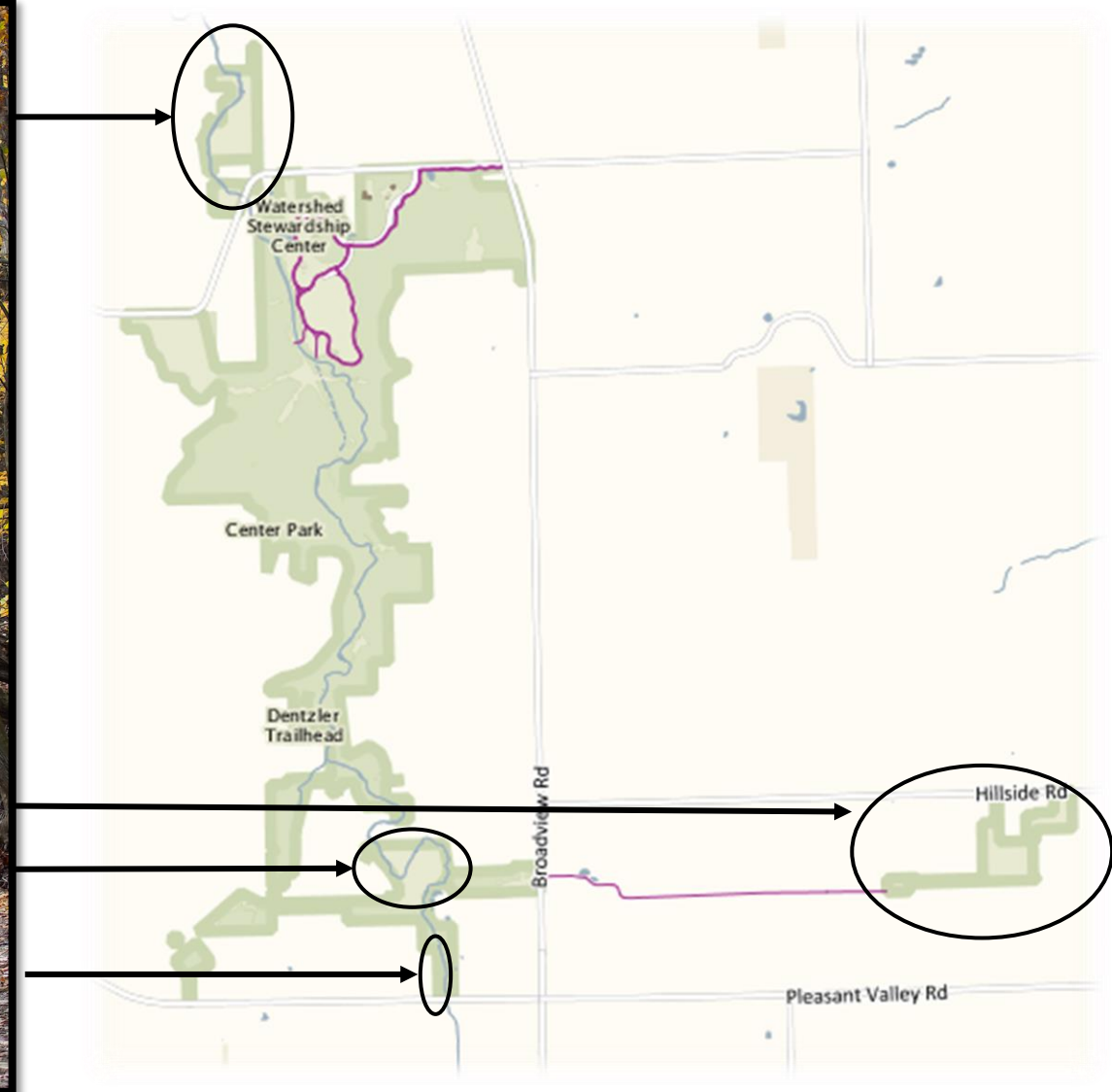
Donated Properties

7.2 Acres Kasdan Property - South Chagrin Reservation



Donated Properties

51.7 Acres West Creek Conservancy 4th Lease Amendment - West Creek Reservation



Donated Properties

The Probate Court & Cleveland Metroparks

- Pursuant to Ohio Revised Code 1545.11, Cleveland Metroparks may acquire lands for the conservation of natural resources
- The lands may be acquired by:
 - Donation
 - Purchase
 - Lease
 - Appropriation
- The terms of donation must first be approved by the probate court before acceptance by the Board
- Cuyahoga County Probate Judges have approved nearly 400 donations of land

Judge	Term	# of Donations	Transactions/Year
Alexander Hadden	1917 – 1926	104	11
George S. Addams	1926 – 1933	46	7
Nelson J. Brewer	1933 – 1953	33	2
Walter T. Kinder	1953 – 1961	34	4
Frank J. Merrick	1961 – 1972	19	2
Francis J. Talty	1973 – 1991	15	1
John J. Donnelly	1991 – 2008	71	4
John E. Corrigan	Jan.-Feb. 2009	3	3
Anthony J. Russo	2009 - 2020	66	6
	Total:	391	4

Brecksville Reservation Expansion



1.7 Acres
United States of America Property



12.7 Acres
Gertsma Property



12.0 Acres
Packard Property



48.2 Acres
WRLC Property



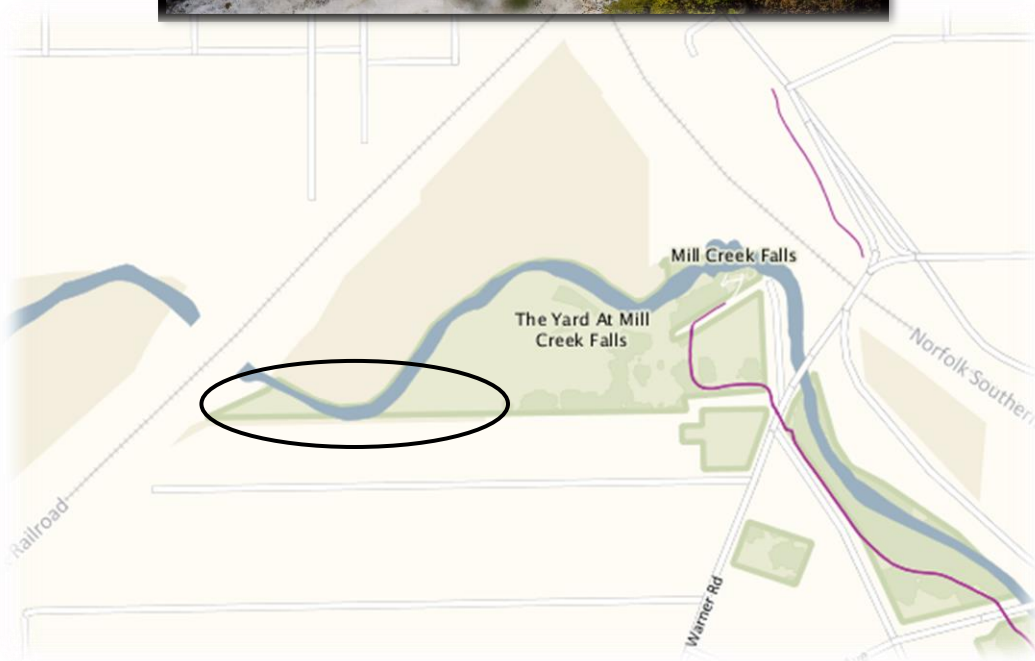
TIGER Trails

Norfolk Southern Railway Co. Wendy Park Bridge 0.4 Acres & Whiskey Island Connector 0.3 Acres



Improved Access

Norfolk Southern Railway Company (3.4 Acres)

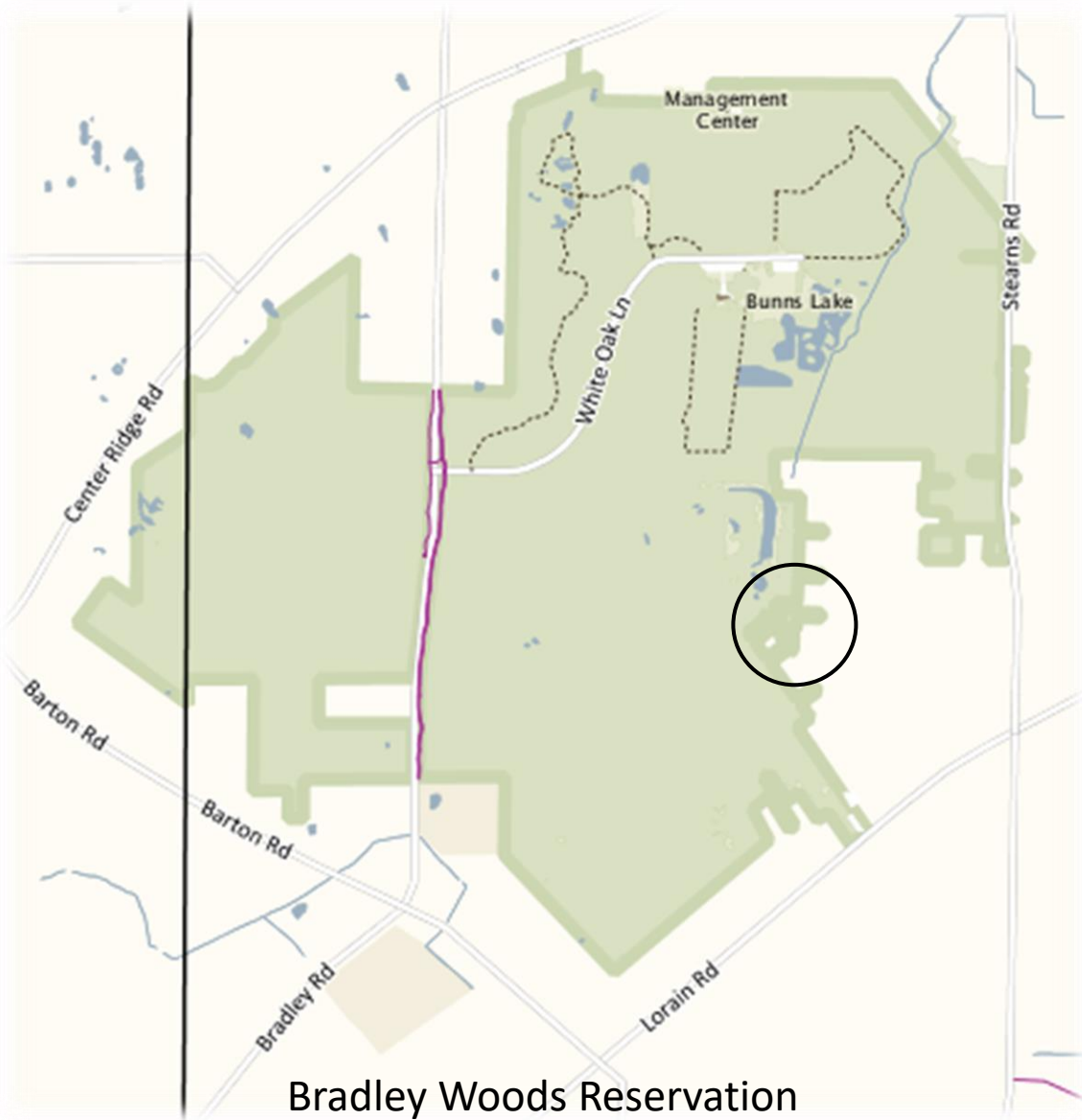


Scojilda Property (1.2 Acres)



Land Bank Properties

1.3 Acres Added Through 3 Transactions



Conservation by the Numbers

RESERVATION ACREAGE

Reservation	Acres*
Acacia	156
Bedford	2,606
Big Creek	769
Bradley Woods	832
Brecksville	4,210
Brookside	132
Euclid Creek	537
Garfield Park	223
Hinckley	2,978
Huntington	103
Lakefront	470
Mill Stream Run	3,509
North Chagrin	2,189
Ohio & Erie Canal	**405
Rocky River	2,581
South Chagrin	1,730
Washington	59
West Creek	426
Zoo	178
Total:	24,093

COMMUNITY ACREAGE

Community	Acres*
Bainbridge Twp.	16
Bay Village	103
Bedford	1,043
Bedford Heights	195
Bentleyville	746
Berea	375
Brecksville	3,385
Broadview Heights	396
Brooklyn	37
Brooklyn Heights	35
Brookpark	259
Chagrin Falls	8
Chagrin Falls Twp.	38
Cleveland	1,692
Cuyahoga Heights	248
Euclid	256
Fairview Park	681
Garfield Heights	210

Community	Acres*
Gates Mills	547
Glenwillow	4
Hinckley Twp.	2,843
Hunting Valley	3
Independence	56
Lakewood	177
Lyndhurst	156
Maple Heights	51
Mayfield Village	633
Middleburg Heights	636
Moreland Hills	384
Newburgh Heights	30
North Olmsted	762
North Ridgeville	28
North Royalton	1,044
Oakwood	63
Olmsted Twp.	196
Parma	499

COUNTY ACREAGE

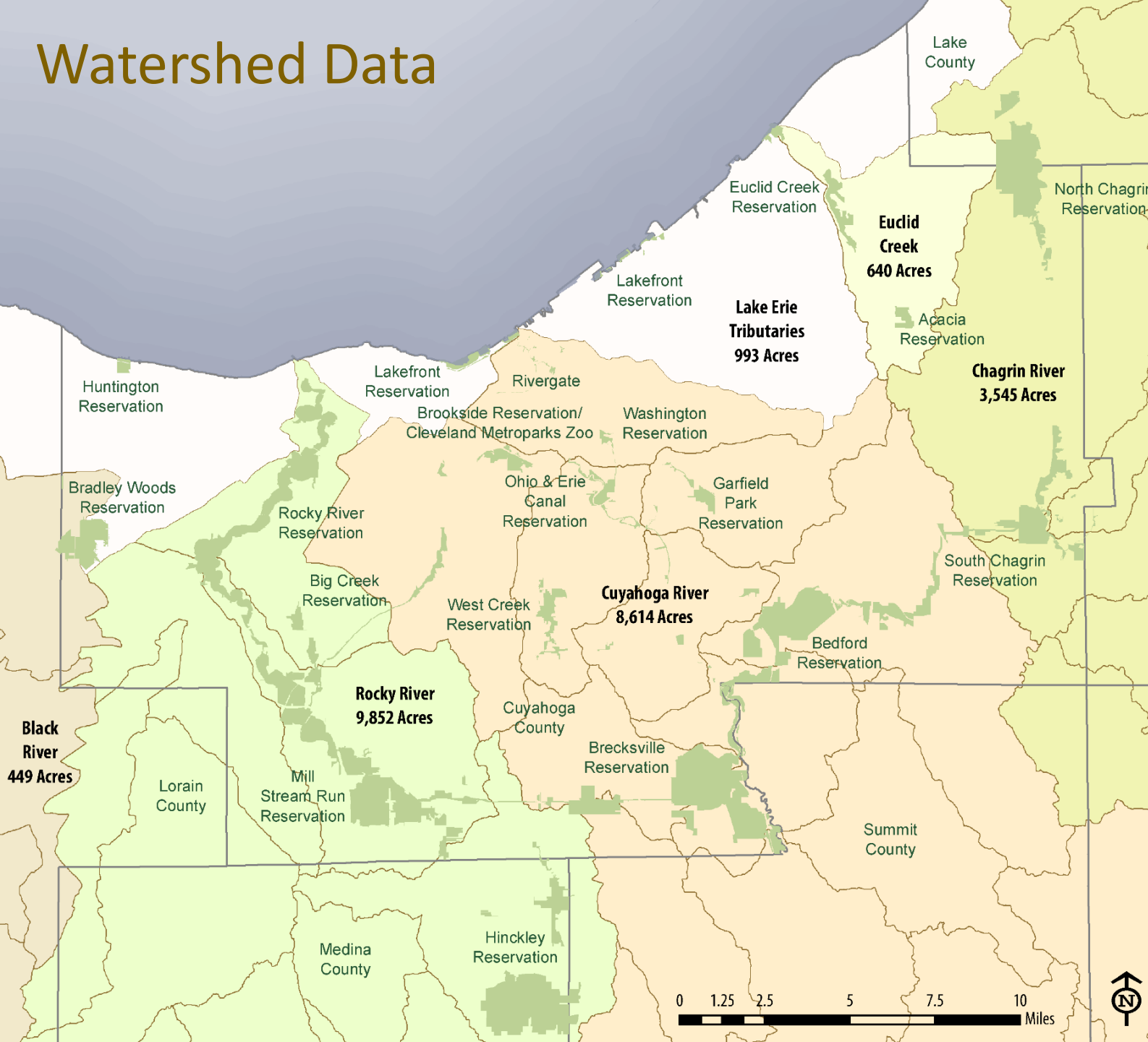
County	Acres*
Cuyahoga	19,902
Geauga	16
Lake	1,007
Lorain	28
Medina	2,843
Summit	297
Total:	24,093

* Acreages are accurate within 1 acre

** 5 acres removed from OEC (termination of lease)

Added Acreage in 2020

Watershed Data

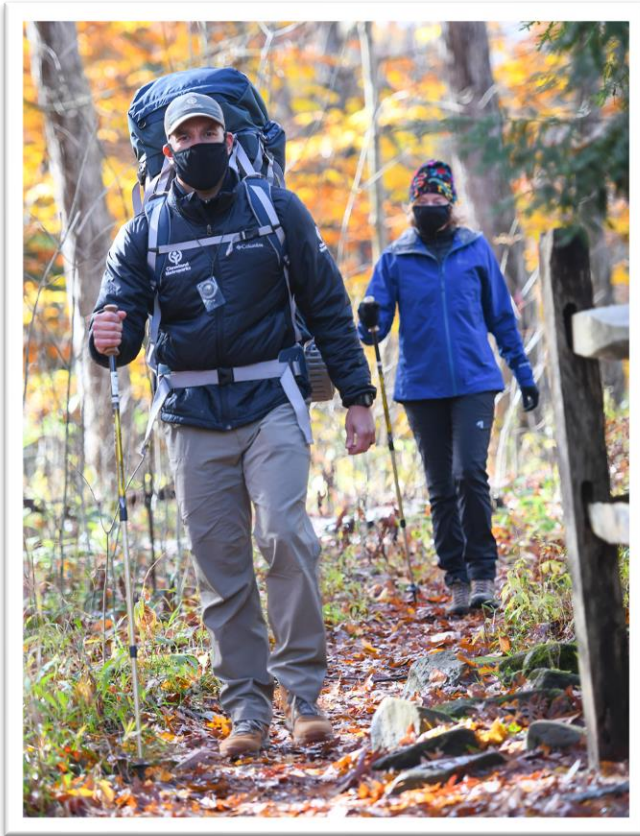
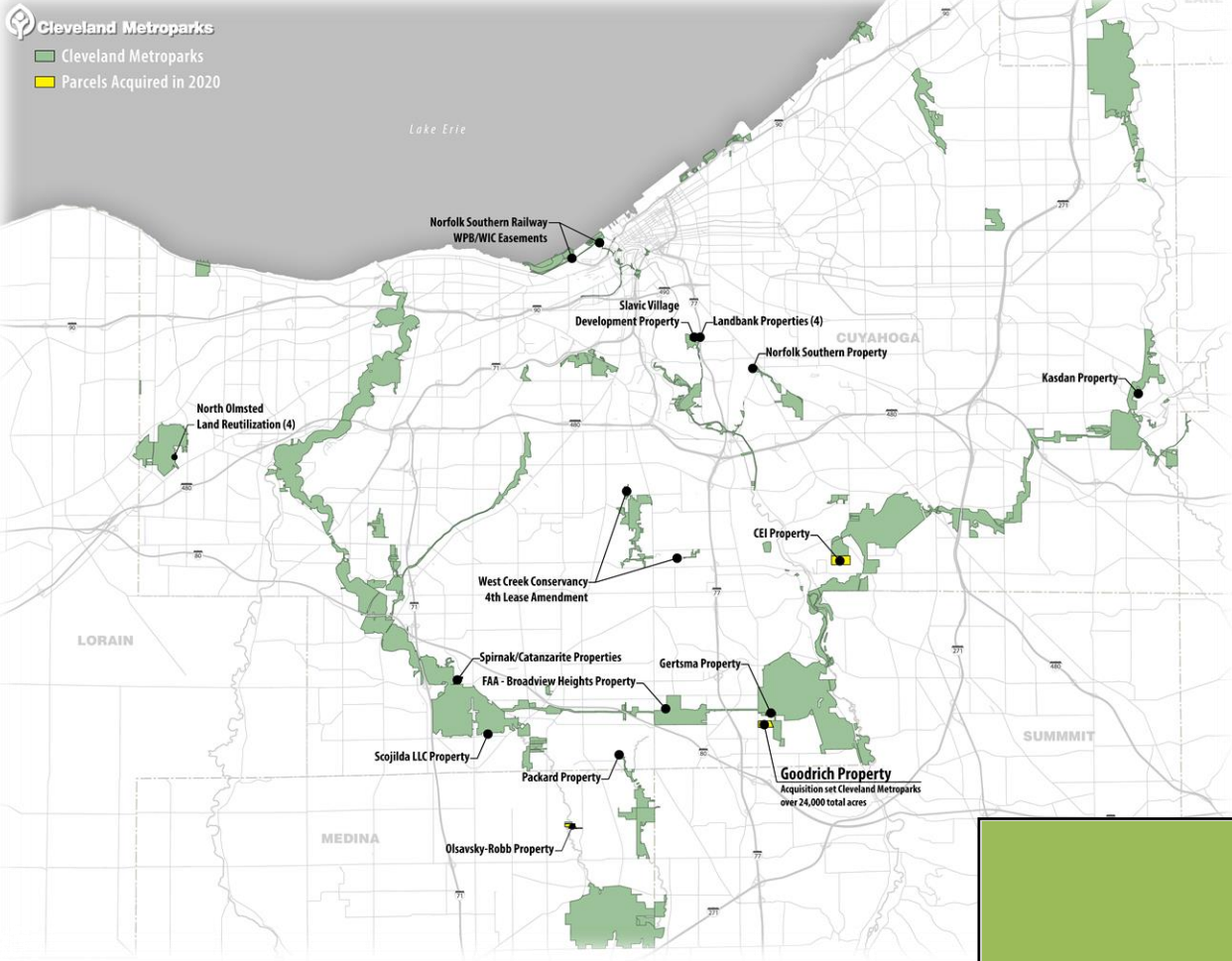


Watershed	Reservation	Acres*
Black River (449 acres)	Bradley Woods	449
Chagrin River (3,545 acres)	North Chagrin	2,189
	South Chagrin	1,356
Cuyahoga River (8,614 acres)	Bedford	2,606
	Big Creek	261
	Brecksville	3,934
	Brookside	132
	Garfield Park	223
	Lakefront	16
	Ohio & Erie Canal	405
	South Chagrin	374
	Washington	59
	West Creek	426
	Zoo	178
Euclid Creek (640 acres)	Acacia	156
	Euclid Creek	484
Lake Erie Tribs (993 acres)	Bradley Woods	383
	Euclid Creek	53
	Huntington	103
	Lakefront	454
Rocky River (9,852 acres)	Big Creek	508
	Brecksville	276
	Hinckley	2,978
	Mill Stream Run	3,509
	Rocky River	2,581

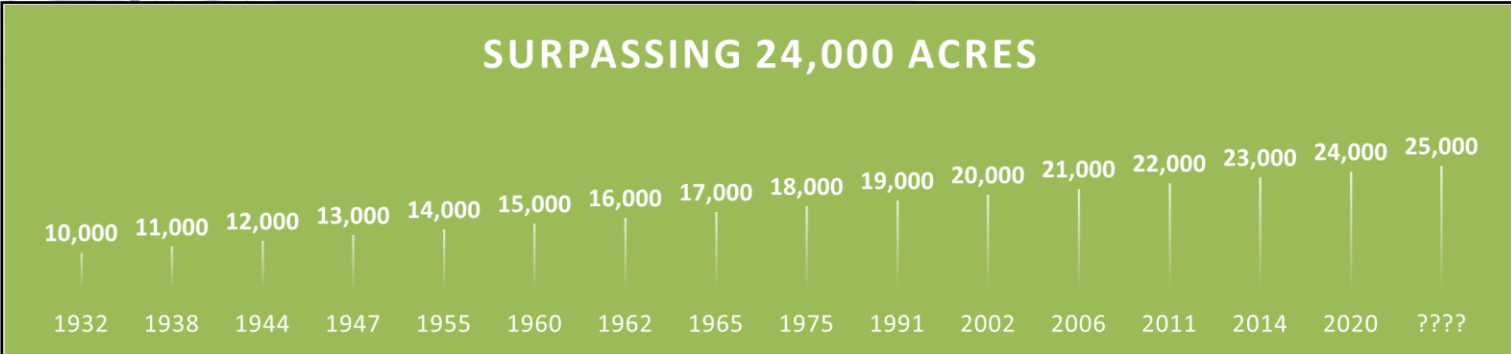
* Acreages are accurate within 1 acre

Cleveland Metroparks Emerald Necklace

Surpassing 24,000 Acres



- Since the early 2000s Cleveland Metroparks has grown by over 4,000 acres
- In 2002 Cleveland Metroparks had grown to over 20,000 acres
- In 2020 Cleveland Metroparks surpassed 24,000 acres with the acquisition of the WRLC-Goodrich property



PROTECTION
CONNECTIONS
RELEVANCY
COME OUT AND PLAY
ORGANIZATIONAL SUSTAINABILITY

2020

A Year of Resiliency

Development Department

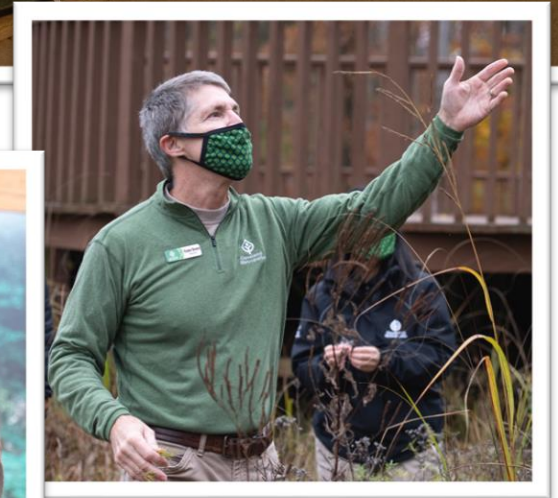
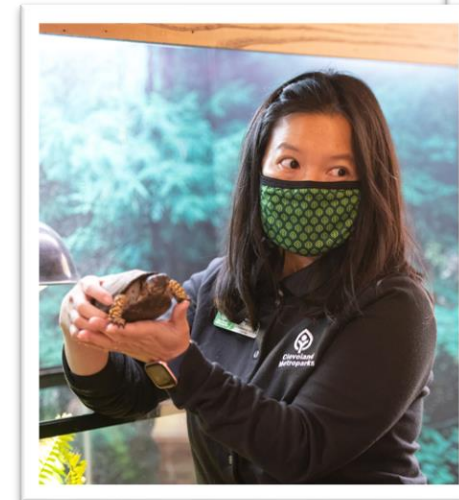
- Establishment of Land Protection Fund
- Securing Grants & Donations

Partners in Land Preservation

- West Creek Conservancy
- Western Reserve Land Conservancy
- Cuyahoga County Land Reutilization Corporation

Natural Resources and Planning & Design Departments

- Collecting Important Natural Resources Data & Restoring Properties
- Developing a Land Protection Plan



Stewardship

Conservation of Our Natural Resources

Encroachments

- 2017 Encroachment Policy
- Boundaries inspected at least every 3 years
- Common encroachments: structures, landscaping, tree cutting, storage of materials and dumping of debris
- Good Neighbor Policy

Conservation Easements

- Conservation option in addition to fee acquisition
- Permanently limit the use of the land
- Nearly 500 acres of conservation easements
- Periodically inspect properties to protect easement

Deed Restrictions

- Hold deed restrictions over park-adjacent properties
- Limits the type of development that can take place
- Common restrictions include: limit use to residential, prohibit billboards or electric poles, or limit driveway access along Parkways
- Actively monitor development and alert owners and municipalities if plans conflict with restrictions



Example of Conservation Easement Terms

- No buildings or structures
- No power lines or communication towers
- No filling or excavation
- No mining or drilling
- No habitat disturbance
- No motorized vehicles
- No dumping
- No manipulation of water courses
- No detrimental use
- Management as a natural area



A close-up photograph of a leaf with water droplets, serving as a background for the text. The leaf is partially green and partially brown, with numerous small, clear water droplets scattered across its surface. The text is centered on the leaf.

Thank You!

Any Questions?